



QPM Hochdruck Kühlmitteldüsen für CNC Maschinen	QPM Arrosage Haute Pression pour machines CNC	QPM Coolant nozzles for CNC machines
Inhalt / Sommaire		Seite/ Page
<u>Plug Jet</u>		
<u>Easy Jet</u>		
<u>Jiffy Jet</u>		
<u>Black Eye</u>		
<u>Mill Jet</u>		
<u>Pressure Max</u>		
<u>Jet Bolt</u>		
<u>Lock Jet</u>		
<u>Screw Ball</u>		
<u>Bug Eye</u>		
<u>Cap Jet</u>		
<u>Dual Fit</u>		
<u>Lolli Pop</u>		
<u>Twin Pop</u>		
<u>Extension Tubes</u>		
<u>Spray Tips</u>		
<u>Jet Tube</u>		

PlugJet



max. 10 bar
max. 70° C

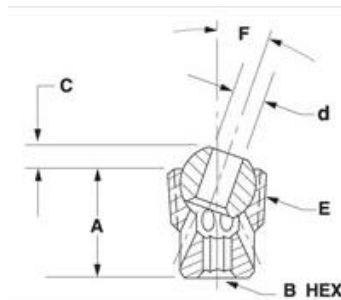
PlugJet

- Material:
Körper - Acetal
Kugel – Rostfreier Stahl
- Arbeitstemperatur max.:70° C
- Druck max.: 10 bar
- Ideal wenn sehr wenig Platz für eine Kühlmitteldüse vorhanden ist.
- Düse kann je 35° gekippt werden.
- Montage:
Führen Sie den Innensechskant Schlüssel in das Loch der Kugel ein bis er greift. Anschliessend drehen Sie die PlugJet Düse ins Loch bis sie fest eingefügt und der Umgebungsrand eben ist.



PlugJet

- Matériel:
Corps – Acétal
Bille – inox
- Température de travail max.:70° C
- Pression max.: 10 bar
- Ideal si l'on manque de place pour une buse d'arrosage.
- La buse peut basculer de 2 x 35°.
- Montage:
Insérez le clé mâle coudée pour vis à six pans creux aux trous de la boule jusqu'à ce qu'elle saisisse. Ensuite tournez le PlugJet solidement au trou jusqu'à ce que le bord soit concis.



PlugJet

- Material:
Body –Acetal,
Ball – Stainless Steel.
- Operating Temperature:max.160°F
- Pressure max.: 150psi (10 bar)
- Ideal for machining applications where nozzle projections must be minimized.
- 35° adjustment either side of centerline
- Mounting advice:
Simply insert the end of allen wrench (included) into the hole in the stainless ball until it engages the hex hole in the acetal body, then tighten the PlugJet into the tapped hole until body is flush.



Bestell/Order-Information			Réf.	Grösse / Size	A		B(HEX)		C		d		F	Configuration
Art. Nr.	Modell	Bezeichnung		„E“	Inch	mm	Inch		Inch	mm	Inch	mm	Degrees	
Art. No.	Model	Description												
22-10100	PJ00510	Plug Jet		1/8 NPT	0.50	12.7	9/64	0.12	3.0	0.16	4.0	0-35°		
22-10110	PJ00520	Plug Jet		1/8 BSPT	0.50	12.7	9/64	0.12	3.0	0.16	4.0	0-35°		
22-10120	PJ00530	Plug Jet		¼ NPT/BSPT	0.62	15.7	9/64	0.15	3.8	0.16	4.0	0-40°		
22-10130	PJ00540	Plug Jet		3/8 NPT/BSPT	0.75	19.0	3/16	0.18	4.5	0.22	5.6	0-40°		

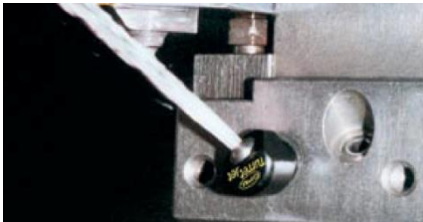
EasyJet



max. 10 bar
max. 70° C

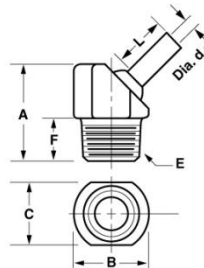
EasyJet

- Material:
Körper - Acetal
Kugel + Verlängerung – Rostfreier Stahl
- Arbeitstemperatur max.: 70° C
- Druck max: 10 bar
- Düse kann 70° gekippt werden.
- Wandelt jede NPT/BSPT Öffnung in eine vollwertige Kühlmitteldüse
- Montage:
Mit EasyJet wird jede einfache Kühlmittelbohrung innert Sekunden einstellbar. In die Kühlmittelbohrung schrauben, mit dem Imbuschlüssel oder Schraubenzieher ausrichten, testen und evtl. anpassen, fertig.



EasyJet

- Matériel:
Corps – Acétal
Bille et rallonge – inox
- Température de travail max.: 70° C
- Pression max: 10 bar
- La buse peut basculer de 70°.
- Convertit n'importe quel trou NPT/BSPT dans une buse d'arrosage
- Montage:
A l'aide de EasyJet chaque ouverture d'arrosage ce règle en quelques secondes. Visser dans l'ouverture, orienter à l'aide d'une clé six pans ou d'un tournevis, tester et éventuellement ajuster, fini.



EasyJet

- Material:
Body – Acetal,
Ball + Extension – Stainless Steel.
- Operating Temperature: max. 160°F
- Pressure max.: 150psi (10 bar)
- 35° adjustment either side of centerline
- Converts any NPT or BSPT hole to a fully adjustable nozzle
- Hits any target above mounting plane
- Adjusts easily for accurate coolant placement
- Difficult to accidentally knock out of adjustment
- Choose larger orifices for maximum flow
- Choose smaller orifices when using multiple nozzles
- Choose tapped ball if you need to quickly plug the orifice (setscrew included)
- Metric tapped balls allow use with Extension Tubes and Spray Tips
- Choose short extensions for tight spaces like CNC Turning Centers and Screw Machines
- Longer extensions are a breeze to aim and shoot farther, great for Machining Centers and CNC Multi-Axis Grinders

Bestell/Order-Information			Réf.	E		d		L		A		B (HEX)		C		F		Configuration
Art. Nr.	Modell	Bezeichnung	Description	Grösse / Size	Inch	mm	Inch	mm	Inch	mm	Inch	mm	Inch	mm	Inch	mm		
22-10210	TJ00100	Easy Jet	Easy Jet	1/8 NPT/BSPT	0.11	2.8	0	0	0.82	21	0.63	16	0.50	12.7	0.38	9.6		
22-10220	TJ00101	Easy Jet	Easy Jet	1/4 NPT/BSPT	0.16	4	0	0	0.94	24	0.75	19	0.63	16	0.44	11.2		
22-10230	TJ00102	Easy Jet	Easy Jet	3/8 NPT/BSPT	0.22	5.6	0	0	1.13	29	0.88	22.4	0.75	19	0.50	12.7		
22-10240	TJ00130	Easy Jet	Easy Jet	1/8 NPT/BSPT	0.11	2.8	0.25	6.35	0.82	21	0.63	16	0.50	12.7	0.38	9.6		
22-10250	TJ00132	Easy Jet	Easy Jet	1/8 NPT/BSPT	0.11	2.8	1.25	32	0.82	21	0.63	16	0.50	12.7	0.38	9.6		
22-10260	TJ00136	Easy Jet	Easy Jet	1/8 NPT/BSPT	0.16	4	0.5	12.7	0.82	21	0.63	16	0.50	12.7	0.38	9.6		
22-10270	TJ00138	Easy Jet	Easy Jet	1/8 NPT/BSPT	0.16	4	1.25	32	0.82	21	0.63	16	0.50	12.7	0.38	9.6		
22-10280	TJ00144	Easy Jet	Easy Jet	1/4 NPT/BSPT	0.11	2.8	0.25	6.35	0.94	24	0.75	19	0.63	16	0.44	11.2		
22-10290	TJ00148	Easy Jet	Easy Jet	1/4 NPT/BSPT	0.16	4	0.5	12.7	0.94	24	0.75	19	0.63	16	0.44	11.2		
22-10300	TJ00150	Easy Jet	Easy Jet	1/4 NPT/BSPT	0.16	4	1.25	32	0.94	24	0.75	19	0.63	16	0.44	11.2		

Weitere Ausführungen auf Anfrage

Autres modèles sur demande

Further executions on request

JiffyJet



max. 10 bar
max. 70° C

JiffyJet

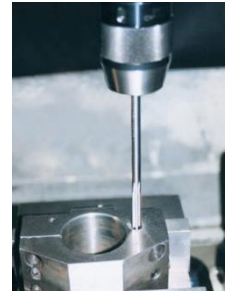
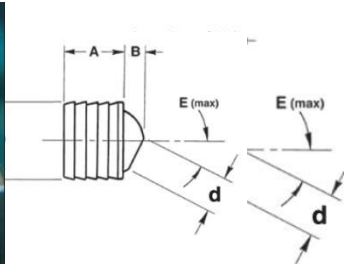
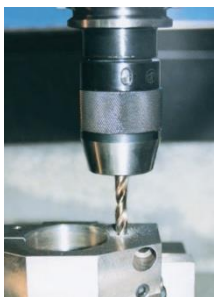
- Material:
Körper - Acetal
Kugel – Rostfreier Stahl
- Arbeitstemperatur max.:70° C
- Druck max.: 10 bar
- Kühlmitteldüse zum Einpressen.
Kühlmittelloch bohren bzw. reiben
auf Nennmass 0, +0.05 mm.
- Düse kann 35° gekippt werden.
- Montage:
Kühlmittelloch bohren bzw. reiben
auf Nennmass 0, +0.05 mm.
Kühlmitteldüse einpressen, fertig.

JiffyJet

- Matériel:
Corps – Acétal
Bille – inox
- Température de travail max.:70° C
- Pression max: 10 bar
- Buse d'arrosage à presser, percer
l'ouverture d'arrosage, roder à la
cote nominale 0, +0.05 mm.
- La buse peut basculer de 35°.
- Montage :
percer l'ouverture d'arrosage,
roder à la cote nominale 0, +0.05
mm, presser la buse d'arrosage,
fini.

JiffyJet

- Material:
Body –Acetal,
Ball – Stainless Steel.
- Operating Temperature:max.160°F
- Rated to 150 psi (10 bar) max.
- Ideal for special tooling, VDI
holders, CNC lathe tooling, screw
machines, etc.
- 35° adjustment either side of
centerline
- Mounting advice:
Just drill and ream a hole, press in
a JiffyJet, and you've got an easily
aimable coolant nozzle!



Bestell/Order-Information Réf.			D	A		B		d Ø		E	Prepared Hole Dia.	Configuration
Art. Nr. Art. No.	Modell Model	Bezeichnung Description	mm	Inch	mm	Inch	mm	Inch	mm	Degrees	Inch	
22-10404	JJ07150	Jiffy Jet	6 mm	0.19	4.8	0.05	1.3	0.08	2	35°	.2362/.2377	
22-10406	JJ07160	Jiffy Jet	6 mm	0.19	4.8	0.05	1.3	0.06	1.5	35°	.2362/.2377	
22-10410	JJ00119	Jiffy Jet	8 mm	0.25	6.35	0.06	1.5	0.11	2.8	35°	.315/.317	
22-10420	JJ00113	Jiffy Jet	10 mm	0.312	8	0.08	2	0.16	4	35°	.3937/.3957	
22-10430	JJ00114	Jiffy Jet	12 mm	0.36	9.2	0.1	2.5	0.16	4	35°	.4724/.4744	
22-10440	JJ00115	Jiffy Jet	14 mm	0.437	11.1	0.13	3.3	0.22	5.6	35°	.551/.553	
22-10450	JJ00116	Jiffy Jet	15 mm	0.437	11.1	0.13	3.3	0.22	5.6	35°	.5906/.5926	

Weitere Ausführungen auf Anfrage

Autres modèles sur demande

Further executions on request

BlackEye



max. 10 bar
max. 70° C

BlackEye

- Material:
Körper - Acetal
Kugel – Rostfreier Stahl
- Arbeitstemperatur max.: 70° C
- Druck max: 10 bar

BlackEye

- Matériel:
Corps – Acétal
Bille – inox
- Température de travail max.: 70° C
- Pression max: 10 bar

BlackEye

- Material:
Body –Acetal,
Ball – Stainless Steel.
- Operating Temperature: max. 160°F
- Rated to 150 psi (10 bar) max.

• Ersetzt fixe Kugeldüsen und macht sie einstellbar

• Düse kann 35° gekippt werden.

• Remplace les buses à boule fixe et est réglable.

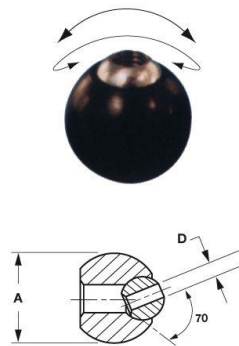
• La buse peut basculer de 35°.

• An easy-to-aim replacement for screw-lock spherical coolant nozzles.

• 35° adjustment either side of centerline

• Just install and tighten lock-screw once, then aim the stainless steel ball with the tip of your allen wrench.

• Choose tapped balls if your toolholders have multiple ports that occasionally need plugging (setscrew included).



Bestell/Order-Information			Réf.	A	D Ø		Configuration
Art. Nr. Art. No.	Modell Model	Bezeichnung Description		mm	Inch	mm	
22-10510	BE00112	Black Eye		10 mm	0.11	2.8	
22-10520	BE00107	Black Eye		12 mm	0.16	4	
22-10530	BE00108	Black Eye		14 mm	0.16	4	
22-10540	BE00109	Black Eye		15 mm	0.16	4	
22-10550	BE00110	Black Eye		22 mm	0.22	5.6	
22-10560	BE00111	Black Eye		½ inch	0.16	4	
22-10570	BE00232	Black Eye		14 mm	M4 x0.7	M4 x 0.7	

Weitere Ausführungen auf Anfrage

Autres modèles sur demande

Further executions on request

MillJet



max. 6.7 bar
max. 70° C

MillJet

- Material:
Körper - Acetal
- Arbeitstemperatur max.: 70° C
- Druck max.: 6.7 bar

- Einstellbar von feinem Spray bis zu vollem Strahl und ausschaltbar
- Ausrichtung von 0 – 90° bei 360°-Drehung. Positionssicher!

MillJet

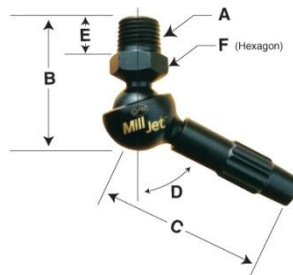
- Matériel:
Corps – Acétal
- Température de travail max.: 70° C
- Pression max: 6.7 bar

- Ajustable du spray très fin jusqu'au jet complet et peuvent ce déclencher.
- Orientation de 0 – 90° avec rotation de 360°.

MillJet

- Material:
Body –Acetal
- Operating Temperature: max. 160°F
- Rated to 100 psi (6.7 bar) max.

- Adjusts from full shutoff to fine fan spray to direct stream
- Aimable from zero to 90° with 360° sweep
- Stays put (doesn't vibrate out of place)
- No interference problems with clamps, fixtures or swarf
- Fits NPT and BSPT threads



Bestell/Order-Information			Réf.	E		B		C		D	A		F		Configuration
Art. Nr.	Modell	Bezeichnung		Inch	mm	Inch	mm	Inch	mm	Degrees	Inch	mm	Inch	mm	
22-10710	MJ00117	Mill Jet		1/4 NPT/BSPT	1.5	38	1.7	43	0-90°	0.44	11	0.625	16		
22-10720	MJ03010	Mill Jet		1/8 NPT/BSPT	1.5	38	1.7	43	0-90°	0.44	11	0.625	16		

PressureMax



max. 100 bar
max. 70° C

PressureMax

- Material: Rostfreier Stahl oder Messing
- Arbeitstemperatur max.: 70° C
- Druck max.: 100 bar

- Kühlmitteldüse für maximalen Druck von 100 bar
- Düse kann 35° gekippt werden.

PressureMax

- Matériel: inox ou laiton
- Température de travail max.: 70°
- Pression max: 100 bar

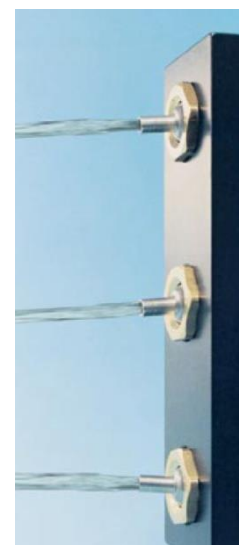
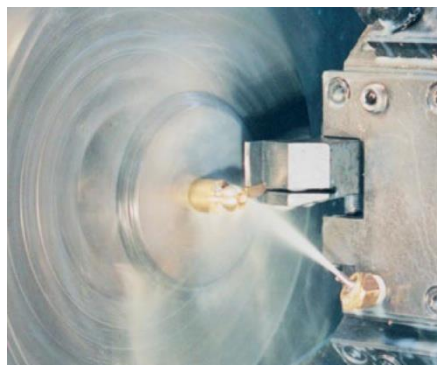
- Buse d'arrosage pour pression maximale de 100 bar
- La buse peut basculer de 35°

PressureMax

- Material: Stainless Steel or brass
- Operating Temperature: max. 160°F
- Rated to 1500 PSI max (100 bar)

- High velocity coolant stream for machining and grinding operations; also ideal for low pressure applications where abrasive swarf is a problem
- 35° adjustment either side of centerline

- Interchangeable spray tips available!
- Choose short extensions for tight spaces like CNC Turning Centers and Screw Machines
- Choose stainless steel bodies when using cutting oils not compatible with brass (i.e. oils containing active sulphur)
- Choose brass bodies for economy
- Pipe sizes fit NPT and BSPT threads



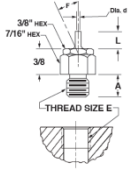
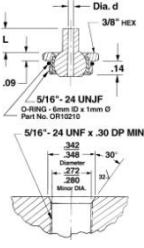
Bestell/Order-Information		Réf.		Verp. Einh. Pkg Qty	d		L		F max Degrees	Part No. Spray Tip only		Spray Tip & Mating Port Detail
Nozzle & Port Detail	Mtl.	Art. Nr. Art. No.	Modell Model		Inch	mm	Inch	mm		Art. Nr. Art. No.	Modell Model	
	Messing / Laiton / Brass	22-10810	PM04010	5	0.040	1.0	0.25	6.35	37°	22-15927	PMT05020	
		22-10820	PM05010	5	0.062	1.6	0.25	6.35	37°	22-15911	PMT04510	
		22-15130	PM04022	5	0.062	1.6	1.25	32	26°	22-15913	PMT04514	
		22-10830	PM06010	5	0.086	2.2	0.25	6.35	37°	22-15915	PMT04520	
		22-15160	PM04032	5	0.086	2.2	1.25	32	26°	22-15917	PMT04523	
		22-15510	PM07001	5	0.117	3.0	0	0	41°	22-15919	PMT04525	
		22-10840	PM04038	5	0.117	3.0	0.25	6.35	30°	22-15920	PMT04526	
		22-10850	PM04042	5	0.117	3.0	1.25	32	26°	22-15922	PMT04528	
		22-15190	PM04046	5	0.160	4.0	0	0	30°	22-15925	PMT04534	
		22-15110	PM04012SS	5	0.040	1.0	0.25	6.35	37°	22-15910	PMT04505SS	
22-15120	PM04020SS	5	0.062	1.6	0.25	6.35	37°	22-15912	PMT04512SS			
22-15140	PM04024SS	5	0.062	1.6	1.25	32	26°	22-15914	PMT04516SS			
22-15150	PM04030SS	5	0.086	2.2	0.25	6.35	37°	22-15916	PMT04522SS			
22-15170	PM04034SS	5	0.086	2.2	1.25	32	26°	22-15918	PMT04524SS			
22-15175	PM04039SS	5	0.117	3.0	0	0	41°	22-15924	PMT04532SS			
22-15180	PM04040SS	5	0.117	3.0	0.25	6.35	30°	22-15921	PMT04527SS			
22-15185	PM04044SS	5	0.117	3.0	1.25	32	26°	22-15923	PMT04529SS			
22-15195	PM04048SS	5	0.160	4.0	0	0	30°	22-15926	PMT04536SS			

Bestell/Order-Information		Réf.		Verp. Einh. Pkg Qty	d		L		F max Degrees	Part No. Spray Tip only		Spray Tip & Mating Port Detail
Nozzle & Port Detail	Mtl.	Art. Nr. Art. No.	Modell Model		Inch	mm	Inch	mm		Art. Nr. Art. No.	Modell Model	
	Messing / Laiton / Brass	22-15610	PM07100	5	0.040	1.0	0.25	6.35	36°	22-15928	PMT07020	
		22-10860	PM07110	5	0.062	1.6	0.25	6.35	36°	22-15930	PMT08010	
		22-15230	PM04122	5	0.062	1.6	1.25	32	32°	22-15932	PMT08014	
		22-10870	PM07120	5	0.086	2.2	0.25	6.35	36°	22-15934	PMT08020	
		22-15260	PM04132	5	0.086	2.2	1.25	32	32°	22-15936	PMT08024	
		22-10880	PM07130	5	0.117	3.0	0	0	44°	22-15940	PMT08030	
		22-15290	PM04139	5	0.117	3.0	0.25	6.35	36°	22-15939	PMT08029	
		22-15380	PM04158	5	0.117	3.0	0.50	12.7	36°	22-15950	PMT08050	
		22-15310	PM04142	5	0.117	3.0	1.25	32	32°	22-15942	PMT08034	
		22-10890	PM07140	5	0.160	4.0	0	0	36°	22-15944	PMT08040	
22-15340	PM04148	5	0.160	4.0	0.50	12.7	32°	22-15946	PMT08042			
22-15360	PM04152	5	0.160	4.0	1.25	32	32°	22-15948	PMT08044			
22-15210	PM04110SS	5	0.040	1.0	0.25	6.35	36°	22-15929	PMT08005SS			
22-15220	PM04120SS	5	0.062	1.6	0.25	6.35	36°	22-15931	PMT08012SS			
22-15240	PM04124SS	5	0.062	1.6	1.25	32	32°	22-15933	PMT08016SS			
22-15250	PM04130SS	5	0.086	2.2	0.25	6.35	36°	22-15935	PMT08022SS			
22-15270	PM04134SS	5	0.086	2.2	1.25	32	32°	22-15937	PMT08026SS			
22-15280	PM04138SS	5	0.117	3.0	0	0	44°	22-15938	PMT08028SS			
22-15300	PM04140SS	5	0.117	3.0	0.25	6.35	36°	22-15941	PMT08032SS			
22-15350	PM04159SS	5	0.117	3.0	0.50	12.7	36°	22-15951	PMT08051SS			
22-15320	PM04144SS	5	0.117	3.0	1.25	32	32°	22-15943	PMT08036SS			
22-15330	PM04146SS	5	0.160	4.0	0	0	36°	22-15945	PMT08041SS			
22-15350	PM04150SS	5	0.160	4.0	0.50	12.7	32°	22-15947	PMT08043SS			
22-15370	PM04154SS	5	0.160	4.0	1.25	32	32°	22-15949	PMT08046SS			

Bestell/Order-Information		Réf.		Verp. Einh. Pkg Qty	d		L		F max Degrees	Part No. Spray Tip only		Spray Tip & Mating Port Detail
Nozzle & Port Detail	Mtl.	Art. Nr. Art. No.	Modell Model		Inch	mm	Inch	mm		Art. Nr. Art. No.	Modell Model	
<p>3/8" NPT/BSPT 3/8" NPT or 3/8" BSPT</p>	Messing / Laiton / Brass	22-15810	PM08210	5	0.062	1.6	0.38	9.6	40°	22-15952	PMT08110	
		22-15814	PM08214	5	0.062	1.6	1.25	32	40°	22-15954	PMT08114	
		22-15820	PM08220	5	0.086	2.2	0.38	9.6	40°	22-15956	PMT08120	
		22-15824	PM08224	5	0.086	2.2	1.25	32	40°	22-15958	PMT08124	
		22-15830	PM08230	5	0.117	3.0	0.50	12.7	40°	22-15960	PMT08130	
		22-15834	PM08234	5	0.117	3.0	1.25	32	40°	22-15962	PMT08134	
		22-15838	PM08238	5	0.160	4.0	0	0	42°	22-15964	PMT08138	
		22-15840	PM08240	5	0.160	4.0	0.50	12.7	40°	22-15966	PMT08140	
		22-15844	PM08244	5	0.160	4.0	1.25	32	40°	22-15968	PMT08144	
		22-15858	PM08258	5	0.197	5.0	0.50	12.7	34°	22-15976	PMT08158	
		22-15848	PM08248	5	0.220	5.6	0	0	34°	22-15970	PMT08148	
		22-15850	PM08250	5	0.220	5.6	0.50	12.7	34°	22-15972	PMT08150	
		22-15854	PM08254	5	0.220	5.6	1.25	32	34°	22-15974	PMT08154	
		Rostfrei / Inox /Stainless	22-15812	PM08212SS	5	0.062	1.6	0.38	9.6	40°	22-15953	
	22-15816		PM08216SS	5	0.062	1.6	1.25	32	40°	22-15955	PMT08116SS	
	22-15822		PM08222SS	5	0.086	2.2	0.38	9.6	40°	22-15957	PMT08122SS	
	22-15826		PM08226SS	5	0.086	2.2	1.25	32	40°	22-15959	PMT08126SS	
	22-15832		PM08232SS	5	0.117	3.0	0.50	12.7	40°	22-15961	PMT08132SS	
	22-15836		PM08236SS	5	0.117	3.0	1.25	32	40°	22-15963	PMT08136SS	
	22-15839		PM08239SS	5	0.160	4.0	0	0	42°	22-15965	PMT08139SS	
	22-15842		PM08242SS	5	0.160	4.0	0.50	12.7	40°	22-15967	PMT08142SS	
	22-15846		PM08246SS	5	0.160	4.0	1.25	32	40°	22-15969	PMT08146SS	
	22-15860		PM08260SS	5	0.197	5.0	0.50	12.7	34°	22-15977	PMT08160SS	
	22-15849		PM08249SS	5	0.220	5.6	0	0	34°	22-15971	PMT08149SS	
	22-15852		PM08252SS	5	0.220	5.6	0.50	12.7	34°	22-15973	PMT08152SS	
	22-15856	PM08256SS	5	0.220	5.6	1.25	32	34°	22-15975	PMT08156SS		

Bestell/Order-Information		Réf.		Verp. Einh. Pkg Qty	d		L		F max Degrees	Part No. Spray Tip only		Spray Tip & Mating Port Detail
Nozzle & Port Detail	Mtl.	Art. Nr. Art. No.	Modell Model		Inch	mm	Inch	mm		Art. Nr. Art. No.	Modell Model	
<p>5/16" - 24 UNF (sapered) 5/16" - 24 UNF x .30 DP MIN.</p>	Messing / Laiton / Brass	22-15710	PM07310	5	0.040	1.0	0.25	6.35	34°	22-15978	PMT08410	
		22-15730	PM07315	5	0.062	1.6	0	0	40°	22-15980	PMT08415	
		22-15750	PM07320	5	0.062	1.6	0.25	6.35	34°	22-15982	PMT08420	
		22-15770	PM07330	5	0.086	2.2	0	0	36°	22-15984	PMT08430	
	Rostfrei / Inox /Stainless	22-15720	PM07312SS	5	0.040	1.0	0.25	6.35	34°	22-15979	PMT08412SS	
		22-15740	PM07316SS	5	0.062	1.6	0	0	40°	22-15981	PMT08416SS	
		22-15760	PM07322SS	5	0.062	1.6	0.25	6.35	34°	22-15983	PMT08422SS	
		22-15780	PM07332SS	5	0.086	2.2	0	0	36°	22-15985	PMT08432SS	

Bestell/Order-Information		Réf.		Verp. Einh. Pkg Qty	d		L		F max Degrees	Part No. Spray Tip only		Spray Tip & Mating Port Detail
Nozzle & Port Detail	Mtl.	Art. Nr. Art. No.	Modell Model		Inch	mm	Inch	mm		Art. Nr. Art. No.	Modell Model	
<p>1/16" NPT/BSPT 1/16" NPT or 1/16" BSPT</p>	Messing / Laiton / Brass	22-15870	PM11610	5	0.040	1.0	0.25	6.35	34°	22-15978	PMT08410	
		22-15874	PM11615	5	0.062	1.6	0	0	40°	22-15980	PMT08415	
		22-15878	PM11620	5	0.062	1.6	0.25	6.35	34°	22-15982	PMT08420	
		22-15882	PM11630	5	0.086	2.2	0	0	36°	22-15984	PMT08430	
	Rostfrei / Inox /Stainless	22-15872	PM11612SS	5	0.040	1.0	0.25	6.35	34°	22-15979	PMT08412SS	
		22-15876	PM11616SS	5	0.062	1.6	0	0	40°	22-15981	PMT08416SS	
		22-15880	PM11622SS	5	0.062	1.6	0.25	6.35	34°	22-15983	PMT08422SS	
		22-15884	PM11632SS	5	0.086	2.2	0	0	36°	22-15985	PMT08432SS	

Bestell/Order-Information				Réf.		Verp Einh.	d		L		A	F max	Part No.		Spray Tip & Mating Port Detail
Nozzle & Port Detail	Mtl	Size E	Art. Nr. Art. No.	Modell Model	Pkg Qty		Inch	mm	Inch	mm			Inch	Degrees	
	Rostfrei / Inox / Stainless	M6x1	22-14110	PM22012SS	5	0.040	1.0	0.25	6.35	0.30	34°	22-15979	PMT08412SS		
			22-14120	PM22016SS	5	0.062	1.6	0	0	0.30	40°	22-15981	PMT08416SS		
			22-14130	PM22022SS	5	0.062	1.6	0.25	6.35	0.30	34°	22-15983	PMT08422SS		
			22-14140	PM22032SS	5	0.086	2.2	0	0	0.30	36°	22-15985	PMT08432SS		
		M8x1.25	22-14210	PM22112SS	5	0.040	1.0	0.25	6.35	0.33	34°	22-15979	PMT08412SS		
			22-14220	PM22116SS	5	0.062	1.6	0	0	0.33	40°	22-15981	PMT08416SS		
			22-14230	PM22122SS	5	0.062	1.6	0.25	6.35	0.33	34°	22-15983	PMT08422SS		
			22-14240	PM22132SS	5	0.086	2.2	0	0	0.33	36°	22-15985	PMT08432SS		
		M10x1.25	22-14310	PM22212SS	5	0.040	1.0	0.25	6.35	0.36	34°	22-15979	PMT08412SS		
			22-14320	PM22226SS	5	0.062	1.6	0	0	0.36	40°	22-15981	PMT08416SS		
			22-14330	PM22222SS	5	0.062	1.6	0.25	6.35	0.36	34°	22-15983	PMT08422SS		
			22-14340	PM22232SS	5	0.086	2.2	0	0	0.36	36°	22-15985	PMT08432SS		
		M10x1.5	22-14410	PM22312SS	5	0.040	1.0	0.25	6.35	0.36	34°	22-15979	PMT08412SS		
			22-14420	PM22316SS	5	0.062	1.6	0	0	0.36	40°	22-15981	PMT08416SS		
			22-14430	PM22322SS	5	0.062	1.6	0.25	6.35	0.36	34°	22-15983	PMT08422SS		
			22-14440	PM22332SS	5	0.086	2.2	0	0	0.36	36°	22-15985	PMT08432SS		

JetBolt



max. 10 bar
max. 70° C

JetBolt

- Material:
Körper - Acetal
Kugel + Verlängerung – Rostfreier Stahl
- Arbeitstemperatur max.: 70°C
- Druck max: 10 bar
- Einfach in Gewindebohrung schrauben
- Düse kann 70° gekippt werden
- Größen für fast alle Maschinen erhältlich
- Wählen Sie eine Düsendurchmesser und passen Sie die Länge wie gewünscht an
- Wählen Sie eine grössere Düsenöffnung für mehr Durchfluss
- Wählen Sie schmalere Düsenöffnungen wenn Sie mehrere Düsen haben
- Wählen Sie Gewinde Kugeln falls eine schnelle Befestigung nötig ist
- Kurze Verlängerungen sind ideal für CNC Drehmaschinen oder vertikale Drehzentren
- Lange Verlängerungen sind einfach einzustellen und geeignet für horizontale Bearbeitungszentren

JetBolt

- Matériel:
Corps – Acétal
Bille et rallonge – inox
- Température de travail max.: 70°C
- Pression max: 10bar
- Visser simplement dans le taraudage
- La buse peut basculer de 70°
- Tailles disponibles pour adapter presque chaque support de machine ou d'outil
- Choisissez le diamètre d'orifice et la longueur de projection pour adapter à votre application
- Choisissez de plus grands orifices pour l'écoulement maximum
- Choisissez de plus petits orifices en employant les becs multiples
- Choisissez la boule tapée si vous devez brancher rapidement l'orifice (vis de réglage incluse) ou l'employer avec des tubes ou SprayTips de prolongation
- Les prolongements courts sont idéaux pour des tours ou des centres verticaux
- Les prolongements longs peuvent être viser simple et sont parfaits pour les centres d'usinage horizontaux

JetBolt

- Material:
Body – Acetal
Ball+Extension – Stainless Steel.
- Operating Temperature: max. 160°F
- Rated to 150PSI (10 bar)
- Screws into a threaded coolant port just like a bolt.
- 35° adjustment either side of centerline.
- Sizes available to fit almost every machine or tool holder
- Choose the orifice diameter and projection length to suit your application
- Choose larger orifices for maximum flow
- Choose smaller orifices when using multiple nozzles
- Choose tapped ball if you need to quickly plug the orifice (setscrew included) or to use with Extension Tubes or SprayTips
- Short extensions are ideal for CNC lathes or vertical turning centers
- Long extensions are a breeze to aim and are perfect for horizontal machining centers



Bestell-/Order-Information			E		d Ø		L		A		B (HEX)	F		Configuration
Art. Nr. Art. No.	Modell Model	Bezeichnung Description	Grösse / Size		Inch	mm	Inch	mm	Inch	mm	mm	Inch	mm	
22-16100	JB09005	JetBolt	M10 x 1.25	0.11	2.8	0	0	0.41	10.4	17	0.36	9.1		
22-16110	JB09010	JetBolt	M10 x 1.25	0.11	2.8	0.25	6.35	0.41	10.4	17	0.36	9.1		
22-16120	JB09013	JetBolt	M10 x 1.25	0.11	2.8	0.50	12.7	0.41	10.4	17	0.36	9.1		
22-16130	JB09015	JetBolt	M10 x 1.25	0.11	2.8	1.25	32	0.41	10.4	17	0.36	9.1		
22-16140	JB09020	JetBolt	M10 x 1.25	0.16	4.0	0	0	0.41	10.4	17	0.36	9.1		
22-16150	JB09025	JetBolt	M10 x 1.25	0.16	4.0	0.50	12.7	0.41	10.4	17	0.36	9.1		
22-16160	JB09030	JetBolt	M10 x 1.25	0.16	4.0	1.25	32	0.41	10.4	17	0.36	9.1		
22-16170	JB09033	JetBolt	M10 x 1.25	M5 x 0.8		0	0	0.41	10.4	17	0.36	9.1		
22-16180	JB09035	JetBolt	M10 x 1.50	0.11	2.8	0	0	0.41	10.4	17	0.36	9.1		
22-16190	JB09040	JetBolt	M10 x 1.50	0.11	2.8	0.25	6.35	0.41	10.4	17	0.36	9.1		
22-16200	JB09043	JetBolt	M10 x 1.50	0.11	2.8	0.50	12.7	0.41	10.4	17	0.36	9.1		
22-16210	JB09045	JetBolt	M10 x 1.50	0.11	2.8	1.25	32	0.41	10.4	17	0.36	9.1		
22-16220	JB09050	JetBolt	M10 x 1.50	0.16	4.0	0	0	0.41	10.4	17	0.36	9.1		
22-16230	JB09055	JetBolt	M10 x 1.50	0.16	4.0	0.50	12.7	0.41	10.4	17	0.36	9.1		
22-16240	JB09060	JetBolt	M10 x 1.50	0.16	4.0	1.25	32	0.41	10.4	17	0.36	9.1		
22-16260	JB09063	JetBolt	M10 x 1.50	M5 x 0.8		0	0	0.41	10.4	17	0.36	9.1		
22-16270	JB09065	JetBolt	M12 x 1.75	0.11	2.8	0	0	0.41	10.4	17	0.36	9.1		
22-16280	JB09070	JetBolt	M12 x 1.75	0.11	2.8	0.25	6.35	0.41	10.4	17	0.36	9.1		
22-16290	JB09073	JetBolt	M12 x 1.75	0.11	2.8	0.50	12.7	0.41	10.4	17	0.36	9.1		
22-16300	JB09075	JetBolt	M12 x 1.75	0.11	2.8	1.25	32	0.41	10.4	17	0.36	9.1		
22-16310	JB09080	JetBolt	M12 x 1.75	0.16	4.0	0	0	0.41	10.4	17	0.36	9.1		
22-16320	JB09085	JetBolt	M12 x 1.75	0.16	4.0	0.50	12.7	0.41	10.4	17	0.36	9.1		
22-16330	JB09090	JetBolt	M12 x 1.75	0.16	4.0	1.25	32	0.41	10.4	17	0.36	9.1		
22-16350	JB09093	JetBolt	M12 x 1.75	M5 x 0.8		0	0	0.41	10.4	17	0.36	9.1		
22-16370	JB09095	JetBolt	M20 x 1.50	0.16	4.0	0.75	19.0	0.60	15.2	24	0.50	12.7		
22-16360	JB09094	JetBolt	M20 x 1.50	0.16	4.0	1.50	38.1	0.60	15.2	24	0.50	12.7		
22-16380	JB09096	JetBolt	M20 x 1.50	0.22	5.6	0.75	19.0	0.60	15.2	24	0.50	12.7		
22-16400	JB09098	JetBolt	M20 x 1.50	0.22	5.6	1.50	38.1	0.60	15.2	24	0.50	12.7		
22-16390	JB09097	JetBolt	M20 x 1.50	0.28	7.1	0.75	19.0	0.60	15.2	24	0.50	12.7		
22-16410	JB09099	JetBolt	M20 x 1.50	0.28	7.1	1.50	38.1	0.60	15.2	24	0.50	12.7		
22-16420	JB09100	JetBolt	1/8 NPT/BSPT	0.11	2.8	0	0	0.41	10.4	17	0.39	9.9		
22-16450	JB09130	JetBolt	1/8 NPT/BSPT	0.11	2.8	0.25	6.35	0.41	10.4	17	0.39	9.9		
22-16460	JB09131	JetBolt	1/8 NPT/BSPT	0.11	2.8	0.50	12.7	0.41	10.4	17	0.39	9.9		
22-16470	JB09132	JetBolt	1/8 NPT/BSPT	0.11	2.8	1.25	32	0.41	10.4	17	0.39	9.9		
22-16480	JB09134	JetBolt	1/8 NPT/BSPT	0.16	4.0	0	0	0.41	10.4	17	0.39	9.9		
22-16490	JB09136	JetBolt	1/8 NPT/BSPT	0.16	4.0	0.50	12.7	0.41	10.4	17	0.39	9.9		
22-16500	JB09138	JetBolt	1/8 NPT/BSPT	0.16	4.0	1.25	32	0.41	10.4	17	0.39	9.9		
22-16520	JB09141	JetBolt	1/8 NPT/BSPT	M5 x 0.8		0	0	0.41	10.4	17	0.39	9.9		
22-16530	JB09142	JetBolt	1/4 NPT/BSPT	0.11	2.8	0	0	0.41	10.4	17	0.50	12.7		
22-16540	JB09144	JetBolt	1/4 NPT/BSPT	0.11	2.8	0.25	6.35	0.41	10.4	17	0.50	12.7		
22-16550	JB09145	JetBolt	1/4 NPT/BSPT	0.11	2.8	0.50	12.7	0.41	10.4	17	0.50	12.7		
22-16560	JB09146	JetBolt	1/4 NPT/BSPT	0.11	2.8	1.25	32	0.41	10.4	17	0.50	12.7		
22-16430	JB09101	JetBolt	1/4 NPT/BSPT	0.16	4.0	0	0	0.41	10.4	17	0.50	12.7		
22-16570	JB09148	JetBolt	1/4 NPT/BSPT	0.16	4.0	0.50	12.7	0.41	10.4	17	0.50	12.7		
22-16580	JB09150	JetBolt	1/4 NPT/BSPT	0.16	4.0	1.25	32	0.41	10.4	17	0.50	12.7		
22-16600	JB09153	JetBolt	1/4 NPT/BSPT	M5 x 0.8		0	0	0.41	10.4	17	0.50	12.7		
22-16680	JB09166	JetBolt	3/8 NPT/BSPT	0.11	2.8	0	0	0.41	10.4	17	0.50	12.7		
22-16690	JB09168	JetBolt	3/8 NPT/BSPT	0.11	2.8	0.50	12.7	0.41	10.4	17	0.50	12.7		
22-16700	JB09170	JetBolt	3/8 NPT/BSPT	0.11	2.8	1.25	32	0.41	10.4	17	0.50	12.7		
22-16610	JB09154	JetBolt	3/8 NPT/BSPT	0.16	4.0	0	0	0.41	10.4	17	0.50	12.7		
22-16620	JB09156	JetBolt	3/8 NPT/BSPT	0.16	4.0	0.50	12.7	0.41	10.4	17	0.50	12.7		
22-16630	JB09158	JetBolt	3/8 NPT/BSPT	0.16	4.0	1.25	32	0.41	10.4	17	0.50	12.7		
22-16440	JB09102	JetBolt	3/8 NPT/BSPT	0.22	5.6	0	0	0.41	10.4	17	0.50	12.7		
22-16640	JB09160	JetBolt	3/8 NPT/BSPT	0.22	5.6	0.50	12.7	0.41	10.4	17	0.50	12.7		
22-16650	JB09162	JetBolt	3/8 NPT/BSPT	0.22	5.6	1.25	32	0.41	10.4	17	0.50	12.7		
22-16670	JB09165	JetBolt	3/8 NPT/BSPT	M6 x 1.0		0	0	0.41	10.4	17	0.50	12.7		



Weitere Ausführungen auf Anfrage

Autres modèles sur demande

Further executions on request

LockJet



max. 100 bar
max. 150° C

LockJet

- Material: Rostfreier Stahl oder Messing
- Arbeitstemperatur max.: 150° C
- Druck max.: 100 bar
- Kühlmitteldüse für maximalen Druck von 100 bar
- Düse kann 38° gekippt werden.

LockJet

- Matériel: inox ou laiton
- Température de travail max.: 150°
- Pression max.: 100 bar
- Buse d'arrosage pour pression maximale de 100 bar
- La buse peut basculer de 38°

LockJet

- Material: Stainless Steel or brass
- Operating Temperature: max. 300°F
- Rated to 1500 PSI max (100 bar)
- High velocity coolant stream for machining and grinding operations; also ideal for low pressure applications where abrasive swarf is a problem
- 38° adjustment either side of centerline
- Interchangeable spray tips available!
- Choose short extensions for tight spaces like CNC Turning Centers and Screw Machines
- Choose stainless steel bodies when using cutting oils not compatible with brass (i.e. oils containing active sulphur)
- Choose brass bodies for economy
- Pipe sizes fit NPT and BSPT threads



Bestell/Order-Information		Réf.		Verp. Einh. Pkg Qty	d		L		F max Degrees	Part No. Spray Tip only		Spray Tip & Mating Port Detail
Nozzle & Port Detail	Size E	Art. Nr. Art. No.	Modell Model		Inch	mm	Inch	mm		Art. Nr. Art. No.	Modell Model	
	1/8 NPT/BSPT	22-31110	LJ18110	5	0.062	1.6	0.25	6.35	33°	22-32310	SSB23310	
		22-31120	LJ18120	5	0.062	1.6	1.25	32	28°	22-32320	SSB23320	
		22-31130	LJ18130	5	0.086	2.2	0.25	6.35	33°	22-32330	SSB23330	
		22-31140	LJ18140	5	0.086	2.2	1.25	32	28°	22-32340	SSB23340	
		22-31150	LJ18150	5	0.117	3.0	0.50	12.7	33°	22-32350	SSB23350	
		22-31160	LJ18160	5	0.117	3.0	1.25	32	28°	22-32360	SSB23360	
		22-31165	LJ18165	5	0.125	3.2	6.0	152	28°	22-11838	LP05526	
		22-31170	LJ18170	5	0.160	4.0	0.50	12.7	28°	22-32370	SSB23370	
22-31180	LJ18180	5	0.160	4.0	1.25	32	28°	22-32380	SSB23380			
	1/4 NPT/BSPT	22-31210	LJ18210	5	0.062	1.6	0.38	9.6	33°	22-32410	SSB23410	
		22-31220	LJ18220	5	0.062	1.6	1.25	32	33°	22-32420	SSB23420	
		22-31230	LJ18230	5	0.086	2.2	0.38	9.6	33°	22-32430	SSB23430	
		22-31235	LJ18235	5	0.086	2.2	1.25	32	33°	22-32435	SSB23435	
		22-31240	LJ18240	5	0.117	3.0	0.50	12.7	33°	22-32440	SSB23440	
		22-31245	LJ18245	5	0.117	3.0	1.25	32	33°	22-32445	SSB23445	
		22-31255	LJ18255	5	0.125	3.2	6.0	152	33°	22-11806	LP05506	
		22-31260	LJ18260	5	0.160	4.0	0.50	12.7	33°	22-32460	SSB23460	
22-31265	LJ18265	5	0.160	4.0	1.25	32	33°	22-32465	SSB23465			
22-31270	LJ18270	5	0.220	5.6	0.50	12.7	27°	22-32470	SSB2370			
22-31275	LJ18275	5	0.220	5.6	1.25	32	27°	22-32475	SSB2375			
	3/8 NPT/BSPT	22-31305	LJ18305	5	0.125	3.2	6.0	152	38°	22-11820	LP05514	
		22-31310	LJ18310	5	0.160	4.0	0.75	19	33°	22-32510	SSB23510	
		22-31320	LJ18320	5	0.160	4.0	1.50	38	33°	22-32520	SSB23520	
		22-31330	LJ18330	5	0.187	4.8	6.0	152	33°	22-11830	LP05516	
		22-31340	LJ18340	5	0.220	5.6	0.75	19	27°	22-32540	SSB23540	
		22-31350	LJ18350	5	0.220	5.6	1.5	38	27°	22-32550	SSB23550	
		22-31360	LJ18360	5	0.280	7.1	0.75	19	23°	22-32560	SSB23560	
		22-31370	LJ18370	5	0.280	7.1	1.50	38	23°	22-32570	SSB23570	

ScrewBall



max. 10 bar
max. 70° C

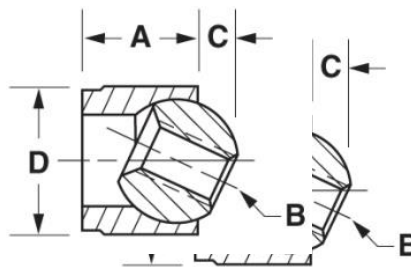
ScrewBall

- Material:
Körper - Acetal
Kugel – Rostfreier Stahl
- Arbeitstemperatur max.: 70° C
- Druck max.: 10 bar
- Gleich wie JiffyJet, kann dank Gewinde aber verschlossen oder mit Verlängerung versehen werden.
- Düse kann 35° gekippt werden.



ScrewBall

- Matériel:
Corps – Acétal
Bille – inox
- Température de travail max.: 70° C
- Pression max: 10 bar
- Comme JiffyJet, peut par contre être bouché ou rallongé à l'aide du pas de vis.
- La buse peut basculer de 35°.



ScrewBall

- Material:
Body –Acetal
Ball – Stainless Steel.
- Operating Temperature: max. 160°F
- Rated to 150 PSI (10 bar) max
- Just drill and ream a hole, press in a ScrewBall, and you've got an easily aimable coolant nozzle
- Threaded hole can be fitted with an ExtensionTube, SprayTip or plugged with a setscrew
- 35° adjustment either side of centerline
- Ideal for quick change toolholders with multiple ports
- Choose Black or White body color for best economy
- Choose Blue, Yellow or Orange body color for aesthetic value when implementing corporate color schemes

Bestell/Order-Information			Ref.	A	B	C	D	Body Color	Prepared Hole Tolerance	Configuration
Art. Nr.	Modell	Bezeichnung		mm	Thread	Inch	Nominal Dia mm			
Art. No.	Model	Description								
22-11110	SB09506	Screw Ball		6 mm	M3.5x0.6	1.5	8 mm	Black	H9	
22-11120	SB09510	Screw Ball		7 mm	M4x0.7	2.0	10 mm	White	H9	
22-11130	SB09511	Screw Ball		7 mm	M4x0.7	2.0	10 mm	Black	H9	
22-11140	SB09520	Screw Ball		8 mm	M5x0.8	2.5	12 mm	White	H9	
22-11150	SB09521	Screw Ball		8 mm	M5x0.8	2.5	12 mm	Black	H9	
22-11160	SB09530	Screw Ball		10 mm	M6x1	3.0	14 mm	White	H9	
22-11170	SB09531	Screw Ball		10 mm	M6x1	3.0	14 mm	Black	H9	
22-11180	SB09540	Screw Ball		6 mm	M6x1	3.0	15 mm	Black	H9	

Weitere Ausführungen auf Anfrage

Autres modèles sur demande

Further executions on request

Bug Eye



max. 10 bar
max. 70° C

Bug Eye

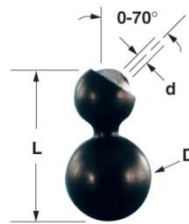
- Material:
Körper - Acetal
Kugel – Rostfreier Stahl
- Arbeitstemperatur max.: 70° C
- Druck max: 10 bar
- Ersetzt fixe Kugeldüsen und macht sie einstellbar
- Düse kann 70° gekippt werden

Bug Eye

- Matériel:
Corps – Acétal
Bille – inox
- Température de travail max.: 70°C
- Pression max: 10 bar
- Remplace les buses à boule fixe et est réglable.
- La buse peut basculer de 70°

Bug Eye

- Material:
Body –Acetal
Ball – Stainless Steel.
- Operating Temperature: max. 160°F
- Rated to 150 PSI (10 bar) max
- Extended ball socket provides greater range of aimability than the BlackEye while still being relatively compact
- 70° adjustment of nozzle
- Ideal for tool positions where tool tip is difficult to reach with standard screw-lock ball (i.e. short tool projections)
- Sizes available to fit almost every machine or toolholder
- Choose the orifice diameter to suit your application



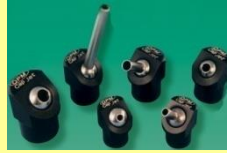
Bestell/Order-Information			Réf.		D	d		L		Configuration	
Art. Nr.	Modell	Bezeichnung	mm	Inch		mm	Inch	mm			
22-11310	BUG02305	Bug Eye	12 mm	0.11	2.8	1.10	28				
22-11311	BUG02310	Bug Eye	12 mm	0.16	4.0	1.10	28				
22-11319	BUG02315	Bug Eye	14 mm	0.11	2.8	1.20	30.5				
22-11320	BUG02320	Bug Eye	14 mm	0.16	4.0	1.20	30.5				
22-11330	BUG02325	Bug Eye	15 mm	0.11	2.8	1.23	31				
22-11335	BUG02330	Bug Eye	15 mm	0.16	4.0	1.23	31				
22-11338	BUG02335	Bug Eye	22 mm	0.11	2.8	1.50	38				
22-11340	BUG02340	Bug Eye	22 mm	0.16	4.0	1.50	38				
22-11312	BUG2312	Bug Eye	12 mm		M6 x 1.0	1.10	28				
22-11322	BUG2322	Bug Eye	14 mm		M6 x 1.0	1.20	30.5				
22-11336	BUG2332	Bug Eye	15 mm		M6 x 1.0	1.23	31				
22-11342	BUG2342	Bug Eye	22 mm		M6 x 1.0	1.50	38				

Weitere Ausführungen auf Anfrage

Autres modèles sur demande

Further executions on request

Cap Jet



max. 10 bar
max. 70° C

Cap Jet

- Material:
Körper - Acetal
Kugel + Verlängerung – Rostfreier Stahl
- Arbeitstemperatur max.: 70° C
- Druck max: 10 bar
- Wandelt jede NPT/BSPT Oeffnung in eine vollwertige Kühlmitteldüse
- **Wie EasyJet aber mit Innengewinde**
- Düse kann 70° gekippt werden.

Montage:

Mit CapJet wird jede einfache Kühlmittelbohrung innert Sekunden einstellbar. In die Kühlmittelbohrung schrauben, mit dem Imbusschlüssel oder Schraubenzieher ausrichten, testen und evtl. anpassen, fertig.

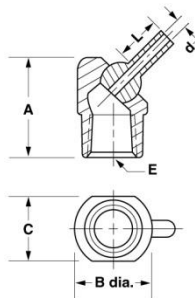


Cap Jet

- Matériel:
Corps – Acétal
Bille et rallonge – inox
- Température de travail max.: 70° C
- Pression max: 10 bar
- Convertit n'importe quel trou NPT/BSPT dans une buse d'arrosage
- **Comme EasyJet mais avec filetage vers l'intérieur**
- La buse peut basculer de 70°.

• Montage:

A l'aide de CapJet chaque ouverture d'arrosage ce règle en quelques secondes. Visser dans l'ouverture, orienter à l'aide d'une clé six pans ou d'un tournevis, tester et éventuellement ajuster, fini



Cap Jet

- Material:
Body –Acetal
Ball – Stainless Steel.
- Operating Temperature: max. 160°F
- Rated to 150 PSI (10 bar) max
- Screws onto any NPT or BSPT pipe nipple just like a pipe cap
- **Same features as the Easy Jet / TurretJet, except with female pipe thread**
- 70° adjustment of nozzle

- Ideal for high production, dedicated machine tools with rigid coolant piping
- Choose orifice size and nozzle extension to suit your application
- Choose short extensions for tight spaces and where stringy swarf is a problem
- Long extensions make aiming a breeze and shoot farther
- Choose larger orifices for maximum flow
- Choose smaller orifices when using multiple nozzles
- Choose tapped ball if you need to quickly plug the orifice (setscrew included)
- Metric tapped balls allow use with Extension Tubes and Spray Tips.

Bestell/Order-Information			Réf.	E		d		L		A		B		C		Configuration
Art. Nr.	Modell	Bezeichnung		Größe / Size	Inch	mm	Inch	mm	Inch	mm	Inch	mm	Inch	mm		
22-11410	CJ07510	Cap Jet		1/8 NPT/BSPT	0.11	2.8	0	0	0.82	21	0.63	16	0.5	12.7		
22-11420	CJ07512	Cap Jet		1/8 NPT/BSPT	0.11	2.8	0.25	6.35	0.82	21	0.63	16	0.5	12.7		
22-11430	CJ07518	Cap Jet		1/8 NPT/BSPT	0.16	4	0.5	12.7	0.82	21	0.63	16	0.5	12.7		
22-11450	CJ07530	Cap Jet		1/4 NPT/BSPT	0.16	4	0	0	0.94	24	0.75	19	0.63	16		
22-11460	CJ07532	Cap Jet		1/4 NPT/BSPT	0.16	4	0.5	12.7	0.94	24	0.75	19	0.63	16		
22-11470	CJ07534	Cap Jet		1/4 NPT/BSPT	0.16	4	1.25	32	0.94	24	0.75	19	0.63	16		
22-11480	CJ07544	Cap Jet		3/8 NPT/BSPT	0.22	5.6	0	0	1.13	29	0.88	22.4	0.75	19		

Weitere Ausführungen auf Anfrage

Autres modèles sur demande

Further executions on request

Dual Fit



max. 10 / 100 bar
max. 70° / 150° C

Dual Fit

- Acetal Version bis max. 10 bar Druck
- Messing Version bis max. (100 bar Druck
- Für Easy Jet und Cap Jet
- Passt für NPT und BSPT Gewinde
- Kompakte Bauweise
- Ermöglicht die Verwendung von metrischen oder Inch Fittings und Düsen

Dual Fit

- Version en acetal jusqu'à 10 bar maximum
- Version en laiton jusqu'à 100 bar maximum
- Pour Easy Jet et Cap Jet
- Adapte des filetages de NPT et de BSPT
- Conception compact
- Permet l'usage des raccords et des buse metric et inch

Dual Fit

- Acetal version rated to 150 psi (10 bar) maximum
- Brass version rated to 1500 psi (100 bar) maximum
- For Easy Jet and Cap Jet
- Fits both NPT and BSPT (metric pipe) threads
- Compact design is ideal for tight spaces
- Allows you to use inch or metric fittings and nozzles



Bestell/Order-Information				E		F		Material		L		A		D		Dia d		Configuration
Art. Nr.	Modell	Bezeichnung	Réf.	NPT	NPT	NPT	BSPT	Inch	mm	Inch	mm	Inch	mm	Inch	mm	Inch	mm	
Kurzer Nippel Nipple court Close Nipple	22-11610	DF08705	Dual Fit	1/8"	1/8"	Messing		0.8	20	0.4	10	0.41	10.4	0.25	6.35			
	22-11710	DF08505	Dual Fit	1/8"	1/8"	Acetal		0.8	20	0.4	10	0.41	10.4	0.25	6.35			
	22-11620	DF08710	Dual Fit	1/4"	1/4"	Messing		0.88	22	0.44	11	0.53	13.5	0.31	7.9			
	22-11720	DF08510	Dual Fit	1/4"	1/4"	Acetal		0.88	22	0.44	11	0.53	13.5	0.31	7.9			
	22-11630	DF08715	Dual Fit	3/8"	3/8"	Messing		1.00	25	0.50	13	0.66	16.8	0.44	11.2			
	22-11730	DF08515	Dual Fit	3/8"	3/8"	Acetal		1.00	25	0.50	13	0.66	16.8	0.44	11.2			
Langer Nippel Nipple longue Long Nipple	22-11640	DF08720	Dual Fit	1/8"	1/8"	Messing		1.50	38	0.34	9	0.41	10.4	0.25	6.35			
	22-11740	DF08520	Dual Fit	1/8"	1/8"	Acetal		1.50	38	0.34	9	0.41	10.4	0.25	6.35			
	22-11650	DF08725	Dual Fit	1/4"	1/4"	Messing		1.50	38	0.44	11	0.53	13.5	0.31	7.9			
	22-11750	DF08525	Dual Fit	1/4"	1/4"	Acetal		1.50	38	0.44	11	0.53	13.5	0.31	7.9			
	22-11660	DF08730	Dual Fit	3/8"	3/8"	Messing		1.50	38	0.50	13	0.66	16.8	0.44	11.2			
	22-11760	DF08530	Dual Fit	3/8"	3/8"	Acetal		1.50	38	0.50	13	0.66	16.8	0.44	11.2			
Reduzierhülse Douille Bushing	22-11663	DF08735	Dual Fit	1/4"	1/8"	Messing		0.65	16	0.44	11	0.56	14.2	0.31	7.9			
	22-11763	DF08535	Dual Fit	1/4"	1/8"	Acetal		0.65	16	0.44	11	0.56	14.2	0.31	7.9			
	22-11666	DF08740	Dual Fit	3/8"	1/4"	Messing		0.73	18	0.50	13	0.75	19.1	0.42	10.7			
	22-11766	DF08540	Dual Fit	3/8"	1/4"	Acetal		0.73	18	0.50	13	0.75	19.1	0.42	10.7			
	22-11693	DF08835	Dual Fit	M12x1.75	1/8"	Messing		0.81	20	0.50	13	0.56	14.2	0.28	7.1			
	22-11696	DF08840	Dual Fit	M14x1.0	1/8"	Messing		0.40	10	0.28	7	0.62	15.7	0.31	7.9			
Adapter Adaptor	22-11670	DF08745	Dual Fit	1/8"	1/8"	Messing		0.78	20	0.4	10	0.46	11.7	0.25	6.35			
	22-11770	DF08545	Dual Fit	1/8"	1/8"	Acetal		0.78	20	0.4	10	0.46	11.7	0.25	6.35			
	22-11680	DF08750	Dual Fit	1/4"	1/4"	Messing		0.93	24	0.5	13	0.60	15.2	0.31	7.9			
	22-11780	DF08550	Dual Fit	1/4"	1/4"	Acetal		0.93	24	0.5	13	0.60	15.2	0.31	7.9			
	22-11690	DF08755	Dual Fit	3/8"	3/8"	Messing		1.04	26	0.55	14	0.73	18.5	0.37	9.4			
	22-11790	DF08555	Dual Fit	3/8"	3/8"	Acetal		1.04	26	0.55	14	0.73	18.5	0.37	9.4			

LolliPop



max. 33 bar
max. 150° C

Lolli Pop

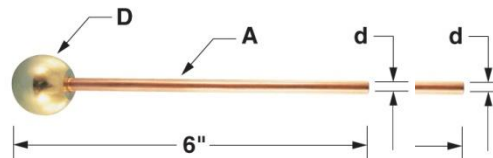
- Material:
Kugel - Messing
Rohr - Kupfer
- Arbeitstemperatur max.: 150°C
- Druck max: 33 bar
- Einfach die Rohre auf die gewünschte Länge schneiden und in die richtige Position biegen.
- Ideal für enge Platzverhältnisse

Lolli Pop

- Matériel:
Bille - Laiton
Tube - cuivre
- Température de travail max.: 150°C
- Pression max: 33 bar
- Coupez les tubes de cuivre à votre longueur désirée et pliez au besoin
- Idéale pour l'espace serré

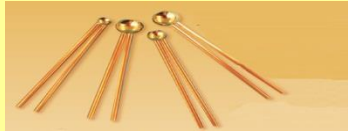
Lolli Pop

- Material:
Ball - Brass
Tube - Copper.
- Operating Temperature: max. 300°F
- Rated to 500 psi (33 bar)
- Just cut the copper tube to your desired length and bend as required
- Space efficient design is ideal for tight spaces
- Ideal for machines with live tooling
- Unlimited routing possibilities
- Sizes available to fit almost every machine or toolholder
- Two tubing sizes to choose from: (3/16" is easiest to bend or choose 1/4" for maximum flow)



Bestell/Order-Information			Réf.	D	A		d		Configuration
Art. Nr. Art. No.	Modell Model	Bezeichnung Description			Inch	mm	Inch	I.D. Ø mm	
22-11800	LP05500	LolliPop		8 mm		4 mm		2 mm	
22-11802	LP05501	LolliPop		9 mm	3/16	4.8	0.12	3	
22-11803	LP05502	LolliPop		10 mm	3/16	4.8	0.12	3	
22-11804	LP05504	LolliPop		11 mm	3/16	4.8	0.12	3	
22-11806	LP05506	LolliPop		12 mm	3/16	4.8	0.12	3	
22-11807	LP05508	LolliPop		12 mm	1/4	6.35	0.18	4.5	
22-11809	LP05510	LolliPop		14 mm	3/16	4.8	0.12	3	
22-11810	LP05512	LolliPop		14 mm	1/4	6.35	0.18	4.5	
22-11820	LP05514	LolliPop		15 mm	3/16	4.8	0.12	3	
22-11830	LP05516	LolliPop		15 mm	1/4	6.35	0.18	4.5	
22-11832	LP05518	LolliPop		18 mm	3/16	4.8	0.12	3	
22-11833	LP05520	LolliPop		18 mm	1/4	6.35	0.18	4.5	
22-11836	LP05522	LolliPop		22 mm	3/16	4.8	0.12	3	
22-11837	LP05524	LolliPop		22 mm	1/4	6.35	0.18	4.5	
22-11838	LP05526	LolliPop		3/8 inch	3/16	4.8	0.12	3	
22-11840	LP05530	LolliPop		1/2 inch	3/16	4.8	0.12	3	
22-11850	LP05532	LolliPop		1/2 inch	1/4	6.35	0.18	4.5	
22-11855	LP05534	LolliPop		5/8 inch	3/16	4.8	0.12	3	
22-11860	LP05536	LolliPop		5/8 inch	1/4	6.35	0.18	4.5	

TwinPop



max. 33 bar
max. 150° C

TwinPop

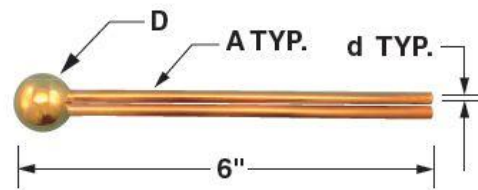
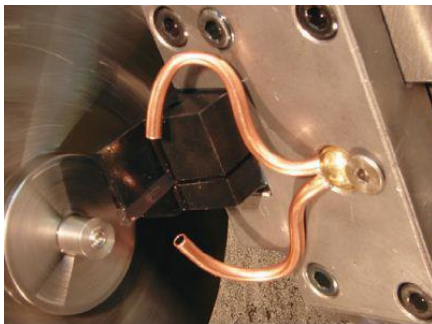
- Material:
Kugel - Messing
Rohr - Kupfer
Lötmedium - bleifrei
- Arbeitstemperatur max.: 150°C
- Druck max: 33 bar
- Zwei Rohre ermöglichen das gleichzeitige Kühlen des Werkzeugs von oben und unten mit einem Anschluss
- Einfach die Rohre auf die gewünschte Länge schneiden und in die richtige Position biegen.
- Ideal für enge Platzverhältnisse

TwinPop

- Matériel:
Bille - Laiton
Tube - cuivre
soudure - sans plomb
- Température de travail max.: 150°C
- Pression max: 33 bar
- De doubles tubes permettent au liquide réfrigérant d'être dirigé au dessus et au dessous de l'outil, employant seulement un port.
- Coupez les tubes de cuivre à votre longueur désirée et pliez au besoin
- Idéale pour l'espace serré

TwinPop

- Material:
Ball - Brass
Tube - Copper
Solder - Lead Free.
- Operating Temperature: max. 300°F
- Rated to 500 psi (33 bar)
- Double tubes allow coolant to be directed above and below the tool, using only one port
- Just cut the copper tubes to your desired length and bend as required
- Space efficient design is ideal for tight spaces
- Ideal for machines with live tooling
- Unlimited routing possibilities
- Sizes available to fit almost every machine or toolholder



Bestell/Order-Information			Réf.	D		A		d		Configuration
Art. Nr.	Modell	Bezeichnung		Inch	mm	Inch	mm	I.D. Ø		
Art. No.	Model	Description								
22-29110	TP05805	TwinPop		1/2	3/16	4.8	0.12	3.0		
22-29120	TP05810	TwinPop		5/8	3/16	4.8	0.12	3.0		
22-29130	TP05815	TwinPop		12mm	3/16	4.8	0.12	3.0		
22-29140	TP05820	TwinPop		14mm	3/16	4.8	0.12	3.0		
22-29150	TP05825	TwinPop		15mm	3/16	4.8	0.12	3.0		
22-29160	TP05827	TwinPop		18mm	3/16	4.8	0.12	3.0		
22-29170	TP05830	TwinPop		22mm	3/16	4.8	0.12	3.0		

Extension Tubes



max. 33 bar
max. 150° C

Verlängerungen

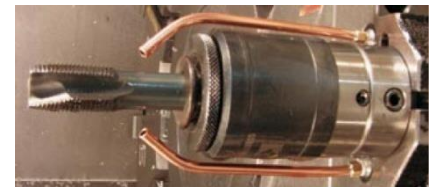
- Einfache Montage
 - Fixe Messing Düsen für einen direkten Kühlmittelstrahl
 - Bewegliche Kupfer Düsen für einen indirekte Kühlmittelstrahl
- Düse auf die gewünschte Länge zuschneiden

Rallonges

- Montage simple
 - Buse en laiton pour diriger le liquide réfrigérant directement vers le tranchant
 - Buse en cuivre pour diriger le liquide réfrigérant autour des obstructions
- Coupez le tube à la longueur désirée pour adapter à votre application

Extension Tubes

- Extension Tubes install in seconds and make aiming a breeze
- Choose rigid brass Extension Tubes to direct coolant straight to the cutting edge
- Choose bendable copper Extension Tubes to direct coolant around obstructions
- Cut tube to desired length to suit your application



Verlängerungen für Screw Ball:
Messing Verlängerung, steif

Rallonges pour Screw Ball:
Rallonge en laiton, rigide

Extensions for Screw Ball:
Rigid brass extension tubes

Bestell/Order-Information Réf.			E	L	d	Configuration
Art. Nr. Art. No.	Modell Model	Bezeichnung Description	Thread	Length	Inside Dia	
22-11185	SBT09705	Verlängerung / Rallonge(Screw Ball)	M3.5x0.6	30 mm	2 mm	
22-11190	SBT09710	Verlängerung / Rallonge(Screw Ball)	M4x0.7	30 mm	2 mm	
22-11200	SBT09720	Verlängerung / Rallonge(Screw Ball)	M5x0.8	40 mm	3 mm	
22-11210	SBT09730	Verlängerung / Rallonge(Screw Ball)	M6x1.0	50 mm	4 mm	
22-11220	SBT09735	Verlängerung / Rallonge(Screw Ball)	M7x1.0	55 mm	5 mm	
22-11230	SBT09740	Verlängerung / Rallonge(Screw Ball)	M8x1.25	55 mm	5.5 mm	

Verlängerungen allgemein:
Kupfer Verlängerung, biegsam

Rallonges générales:
Rallonge en cuivre, flexible

Other extensions:
Rigid brass extension tubes

Bestell/Order-Information Réf.			E	C	A	d		Configuration	
Art. Nr. Art. No.	Modell Model	Bezeichnung Description	Grösse / Size	Hex	Tubing Size Inch mm	Inch	mmd		
22-17100	ET09805	Verlängerung / Rallonge	M3.5x0.6	3/16"	1/8"	3.2	0.07"	1.8	
22-17110	ET09810	Verlängerung / Rallonge	M4x0.7	3/16"	1/8"	3.2	0.07"	1.8	
22-17120	ET09820	Verlängerung / Rallonge	M5x0.8	1/4"	3/16"	4.8	0.12"	3	
22-17130	ET09830	Verlängerung / Rallonge	M6x1.0	1/4"	3/16"	4.8	0.12"	3	
22-17140	ET09835	Verlängerung / Rallonge	M7x1.0	5/16"	1/4"	6.35	0.18"	4.6	
22-17150	ET09840	Verlängerung / Rallonge	M8x1.25	5/16"	1/4"	6.35	0.18"	4.6	

Weitere Ausführungen auf Anfrage

Autres modèles sur demande

Further executions on request

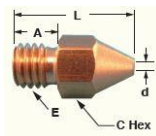
Spray Tips



max. 10 bar
max. 70° C

SprayTips

- Material: Messing
- Arbeitstemperatur max.: 150° C
- Druck max: 33 bar
- Kühlmitteldüse in verschieden Durchmesser erhältlich
- Ideal für einen gebündelten Strahl auf die Schneidfläche
- Abgewinkelter Ausgang der SprayTips, ermöglicht eine angemessene Einstellung der Düse auf das Ziel
- SprayTips kann in diversen Düsen verwendet werden, einschliesslich : ScrewBalls, JetBolts, BrassBalls, BlackEyes, TurretJets, JetTubes, SweatJets, CapJets und BugEyes



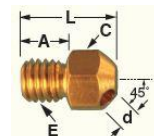
SprayTips

- Matériel: Laiton
- Température de travail max.: 150°C
- Pression max: 33bar
- Disponible dans divers diamètres d'orifice
- Idéal pour concentrer le jet de liquide réfrigérant au tranchant
- La sortie à angles SprayTips permettent viser en dehors de la gamme normale d'un bec du mouvement
- SprayTips peut être employé dans une large variété de becs comprenant : ScrewBalls, JetBolts, BrassBalls, BlackEyes, TurretJets, JetTubes, SweatJets, CapJets et BugEyes



SprayTips

- Material: Brass
- Operating Temperature: max. 300°F
- Rated to 500PSI (33 bar)
- Available in various orifice diameters
- Ideal for concentrating the coolant stream at the cutting edge
- Angled outlet SprayTips enable aiming outside a nozzle's normal range of motion
- SprayTips can be used in a wide variety of nozzles including: ScrewBalls, JetBolts, BrassBalls, BlackEyes, TurretJets, JetTubes, SweatJets, CapJets and BugEyes



	Bestell/Order-Information Réf.			E	d		L		A		C (HEX)	Configuration
	Art. Nr.	Modell	Bezeichnung		Grösse / Size	Inch	mm	Inch	mm	Inch		
Gerader Ausgangsöffnung Sortiedroite Straight Outlet	22-28110	ST16510	SprayTips	M3.5 x 0.6	0.062	1.6	0.42	11	0.14	3.6	3/16	
	22-28115	ST16515	SprayTips	M3.5 x 0.6	0.086	2.2	0.42	11	0.14	3.6	3/16	
	22-28120	ST16520	SprayTips	M4 x 0.7	0.062	1.6	0.54	14	0.18	4.6	3/16	
	22-28125	ST16525	SprayTips	M4 x 0.7	0.086	2.2	0.54	14	0.18	4.6	3/16	
	22-28130	ST16530	SprayTips	M5 x 0.8	0.062	1.6	0.63	16	0.21	5.4	1/4	
	22-28135	ST16535	SprayTips	M5 x 0.8	0.086	2.2	0.63	16	0.21	5.4	1/4	
	22-28140	ST16540	SprayTips	M5 x 0.8	0.117	3.0	0.63	16	0.21	5.4	1/4	
	22-28145	ST16545	SprayTips	M6 x 1.0	0.062	1.6	0.63	16	0.21	5.4	1/4	
	22-28150	ST16550	SprayTips	M6 x 1.0	0.086	2.2	0.63	16	0.21	5.4	1/4	
	22-28155	ST16555	SprayTips	M6 x 1.0	0.117	3.0	0.63	16	0.21	5.4	1/4	
	22-28160	ST16560	SprayTips	M6 x 1.0	0.150	3.8	0.63	16	0.21	5.4	1/4	
	22-28165	ST16565	SprayTips	M8 x 1.25	0.062	1.6	0.80	20	0.30	7.6	3/8	
	22-28170	ST16570	SprayTips	M8 x 1.25	0.086	2.2	0.80	20	0.30	7.6	3/8	
	22-28175	ST16575	SprayTips	M8 x 1.25	0.117	3.0	0.80	20	0.30	7.6	3/8	
	22-28180	ST16580	SprayTips	M8 x 1.25	0.160	4.0	0.80	20	0.30	7.6	3/8	
	22-28185	ST16585	SprayTips	M8 x 1.25	0.220	5.6	0.90	23	0.37	9.4	1/2	
	22-28310	ST16610	SprayTips	1/8 NPT/BSPT	0.062	1.6	0.90	23	0.37	9.4	1/2	
	22-28315	ST16615	SprayTips	1/8 NPT/BSPT	0.086	2.2	0.90	23	0.37	9.4	1/2	
	22-28320	ST16620	SprayTips	1/8 NPT/BSPT	0.117	3.0	0.90	23	0.37	9.4	1/2	
	22-28325	ST16625	SprayTips	1/8 NPT/BSPT	0.160	4.0	0.90	23	0.37	9.4	1/2	
22-28330	ST16630	SprayTips	1/8 NPT/BSPT	0.220	5.6	0.90	23	0.37	9.4	1/2		
22-28335	ST16635	SprayTips	1/8 NPT/BSPT	0.280	7.1	0.90	23	0.37	9.4	1/2		
GeinkelterAus Serie à angle Angled Outlet	22-28350	ST16650	SprayTips	M3.5 x 0.6	0.062	1.6	0.32	8	0.14	3.6	3/16	
	22-28355	ST16655	SprayTips	M4 x 0.7	0.062	1.6	0.36	9	0.18	4.6	3/16	
	22-28360	ST16660	SprayTips	M5 x 0.8	0.086	2.2	0.42	11	0.21	5.4	1/4	
	22-28365	ST16665	SprayTips	M6 x 1.0	0.086	2.2	0.42	11	0.21	5.4	1/4	
	22-28370	ST16670	SprayTips	M6 x 1.0	0.117	3.0	0.42	11	0.21	5.4	1/4	

Weitere Ausführungen auf Anfrage

Autres modèles sur demande

Further executions on request

JetTube

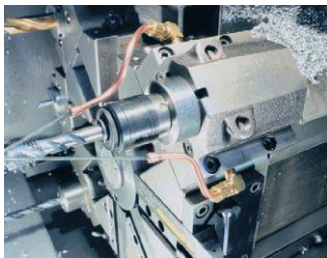


max. 33 bar
max. 70° C

JetTube

- Material:
Rohr – Kupfer
Einfassung – Acetal
Kugel – Rostfreier Stahl
- Arbeitstemperatur max.: 70° C
- Druck max: 33 bar (je nach Anwendung)

- Röhrcchen auf gewünschte Länge zuschneiden, biegen und anschliessend die Düse auf das Werkzeug richten
- Ideal für CNC Schleif-, Fräs- und Drehmaschinen
- **Wichtig: Anschlussverschraubung nicht enthalten, siehe Seite 23**



JetTube

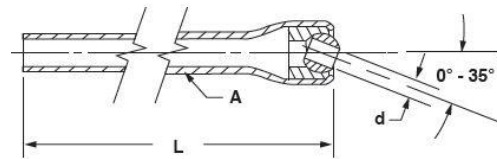
- Matériel:
Tube – Cuivre
Douille - Acetal
Bille – inox
- Température de travail max.: 70° C
- Pression max: 33 bar (variera avec l'application)

- Juste coupez le tube à la longueur désirée, pliez au besoin, puis visez l'orifice sphérique de sortie pour frapper votre cible
- Idéal pour des affûteuses, fraiseuses et tours
- **Important: Vis de connexion non inclus, voir page 23**

JetTube

- Material:
Tube – Copper
Socket - Acetal
Ball – Stainless Steel.
- Operating Temperature: max. 160°F
- Rated to 500PSI (33 bar), (will vary with application)

- Just cut the cooper tube to your desired length, bend as required, then aim the spherical outlet orifice to hit your target
- Ideal for CNC grinders, mill/turn centers and screw machines
- Metric tapped balls in the 1/4", 5/16" and 3/8" sizes allow use with Extension Tubes and Spray Tips
- **Important: Screw connection not included, see page 23**



Bestell/Order-Information			Réf.		d		L		A		Configuration
Art. Nr.	Modell	Bezeichnung	Inch	mm	Inch	mm	Inch	mm	Inch	mm	
22-18010	JT13010	JetTube	0.08	2.0	5 3/4	146	3/16	4.8			
22-18020	JT13020	JetTube	M3.5 x 0.6		5 3/4	146	1/4	6.35			
22-18025	JT13025	JetTube	M4 x 0.7		11 3/4	298	5/16	7.95			
22-18030	JT13030	JetTube	M5 x 0.8		11 3/4	298	3/8	9.5			

Weitere Ausführungen auf Anfrage

Autres modèles sur demande

Further executions on request

CompressionFittings

max. 33 bar
max. 150° C

JetTube

- Material: Messing
- Arbeitstemperatur max. : 150° C
- Druck max.: 33 bar (je nach Anwendung)
- Empfohlen in der Verwendung mit JetTube siehe Seite 22
- Erhältlich in der Ausführung NPT und BSPT Rohrgewinde

JetTube

- Matériel: Laiton
- Température de travail max.: 150°C
- Pression max: 33 bar (variera avec l'application)

- **Recommandé pour une utilisation avec JetTube voir page 22**
- **Disponible en NPT et BSPT filetages**

JetTube

- Material: Brass
- Operating Temperature: max. 300°F
- Rated to 500PSI (33 bar), (will vary with application)
- Recommended for use with JetTube see page 22
- Available in NPT and BSPT pipe threads

Gerade Verbindung:

Inklusive Mutter und Abstandshülse, Messing

Connecteur mâle:

Inclut l'écrou et la douille en laiton

Male Connector:

Includes nut and sleeve, brass

Bestell/Order-Information Réf.			E	Gerades Gewinde Mutterende	L		A		C	Configuration
Art. Nr. Art. No.	Modell Model	Bezeichnung Description	Grösse / Size		Inch	mm	Tube Size Inch	mm	(HEX) Inch	
22-19510	CF15510	CompressionFittings	1/16 NPT/BSPT	3/8-24UN	1.08		3/16		7/16	
22-19010	CF15010	CompressionFittings	1/8 NPT	3/8-24UN	1.08		3/16		7/16	
22-19210	CF15210	CompressionFittings	1/8 BSPT	3/8-24UN	1.08		3/16		7/16	
22-19030	CF15030	CompressionFittings	1/4 NPT	3/8-24UN	1.08		3/16		9/16	
22-19230	CF15230	CompressionFittings	1/4 BSPT	3/8-24UN	1.08		3/16		9/16	
22-19530	CF15530	CompressionFittings	M8x1.0	3/8-24UN	1.08		3/16		7/16	
22-19535	CF15535	CompressionFittings	M8x1.25	3/8-24UN	1.08		3/16		7/16	
22-19538	CF15538	CompressionFittings	M10x1.0	3/8-24UN	1.08		3/16		7/16	
22-19540	CF15540	CompressionFittings	M10x1.25	3/8-24UN	1.08		3/16		7/16	
22-19545	CF15545	CompressionFittings	M10x1.5	3/8-24UN	1.08		3/16		7/16	
22-19020	CF15020	CompressionFittings	1/8 NPT	7/16-24UN	1.08		1/4		7/16	
22-19220	CF15220	CompressionFittings	1/8 BSPT	7/16-24UN	1.08		1/4		7/16	
22-19040	CF15040	CompressionFittings	1/4 NPT	7/16-24UN	1.08		1/4		9/16	
22-19240	CF15240	CompressionFittings	1/4 BSPT	7/16-24UN	1.08		1/4		9/16	
22-19550	CF15550	CompressionFittings	M12x1.75	7/16-24UN	1.08		1/4		1/2	
22-19025	CF15025	CompressionFittings	1/8 NPT	1/2-24UN	1.08		5/16		1/2	
22-19225	CF15225	CompressionFittings	1/8 BSPT	1/2-24UN	1.08		5/16		1/2	
22-19050	CF15050	CompressionFittings	1/4 NPT	1/2-24UN	1.08		5/16		9/16	
22-19250	CF15250	CompressionFittings	1/4 BSPT	1/2-24UN	1.08		5/16		9/16	
22-19060	CF15060	CompressionFittings	1/4 NPT	9/16-24UN	1.08		3/8		9/16	
22-19260	CF15260	CompressionFittings	1/4 BSPT	9/16-24UN	1.08		3/8		9/16	
22-19070	CF15070	CompressionFittings	3/8 NPT	9/16-24UN	1.08		3/8		1 1/16	
22-19270	CF15270	CompressionFittings	3/8 BSPT	9/16-24UN	1.08		3/8		1 1/16	

Winkel Verbindung:

Inklusive Mutter und Abstandshülse, Messing

Coude mâle:

Inclut l'écrou et la douille en laiton

Male Elbow:

Includes nut and sleeve, brass

Bestell/Order-Information Réf.			E	Gerades Gewinde Mutterende	L		A		N	Configuration
Art. Nr. Art. No.	Modell Model	Bezeichnung Description	Grösse / Size		Inch	mm	Tube Size Inch	mm	Inch	
22-19110	CF15110	CompressionFittings	1/8 NPT	3/8-24UN	0.84		3/16		0.69	
22-19310	CF15310	CompressionFittings	1/8 BSPT	3/8-24UN	0.84		3/16		0.69	
22-19130	CF15130	CompressionFittings	1/4 NPT	3/8-24UN	0.86		3/16		0.93	
22-19330	CF15330	CompressionFittings	1/4 BSPT	3/8-24UN	0.86		3/16		0.93	
22-19120	CF15120	CompressionFittings	1/8 NPT	7/16-24UN	0.86		1/4		0.74	
22-19320	CF15320	CompressionFittings	1/8 BSPT	7/16-24UN	0.86		1/4		0.74	
22-19140	CF15140	CompressionFittings	1/4 NPT	7/16-24UN	0.86		1/4		0.94	
22-19340	CF15340	CompressionFittings	1/4 BSPT	7/16-24UN	0.86		1/4		0.94	
22-19125	CF15125	CompressionFittings	1/8 NPT	1/2-24UN	0.88		5/16		0.74	
22-19325	CF15325	CompressionFittings	1/8 BSPT	1/2-24UN	0.88		5/16		0.74	
22-19150	CF15150	CompressionFittings	1/4 NPT	1/2-24UN	0.95		5/16		0.93	
22-19350	CF15350	CompressionFittings	1/4 BSPT	1/2-24UN	0.95		5/16		0.93	

22-19160	CF15160	CompressionFittings	1/4 NPT	9/16-24UN	1.03		3/8		0.93
22-19360	CF15360	CompressionFittings	1/4 BSPT	9/16-24UN	1.03		3/8		0.93
22-19170	CF15170	CompressionFittings	3/8 NPT	9/16-24UN	1.03		3/8		1.00
22-19370	CF15370	CompressionFittings	3/8 BSPT	9/16-24UN	1.03		3/8		1.00

Bestell/Order-Information Réf.			Innengewinde	A		C (HEX) Inch	Configuration
Art. Nr. Art. No.	Modell Model	Bezeichnung Description		Tube Size Inch	mm		
22-19410	CF15410	CompressionFittings	3/8-24UN	3/16		7/16	
22-19420	CF15420	CompressionFittings	7/16-24UN	1/4		1/2	
22-19422	CF15422	CompressionFittings	1/2-24UN	5/16		9/16	
22-19424	CF15424	CompressionFittings	9/16-24UN	3/8		5/8	

Bestell/Order-Information Réf.			A		Configuration
Art. Nr. Art. No.	Modell Model	Bezeichnung Description	Tube Size Inch	mm	
22-19430	CF15430	CompressionFittings	3/16		
22-19440	CF15440	CompressionFittings	1/4		
22-19450	CF15450	CompressionFittings	5/16		
22-19460	CF15460	CompressionFittings	3/8		

Weitere Ausführungen auf Anfrage

Autres modèles sur demande

Further executions on request

Masse i.d.R. in Inch / Dimensions en Inch/ Dimensions in Inches

1 inch = 2.54 cm

Technische Änderungen vorbehalten
Sous réserve de modifications techniques
We reserve the right to change specifications without notice or obligation



Lestoprex AG
Kronenstrasse 11, CH-8735 St. Gallenkappel
Tel. 055 284 51 51 Fax 055 284 51 53
<http://www.lestoprex.ch>
E-Mail: mail@lestoprex.ch